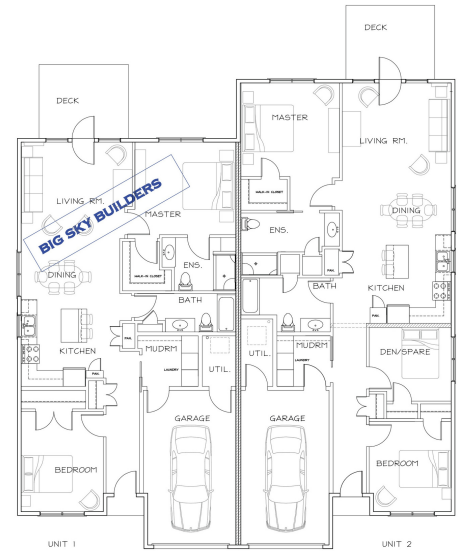


THE LEA

LOT 26 A

STARTING AT \$329,000



PROPERTY DETAILS

Unit 2 - 3 bedrooms 2 bathroom 1,462 sq. ft. plan.

Location: Exit 15 from the 101, South onto HWY 360, Right onto Main St,
Left onto Beckwth Drive, Left onto Gala Drive

Discription:

These thoughtfully designed Semi-Detached homes are right in the heart of Berwick. Minutes from Hwy 101 and walkable to downtown, The Kings Mutual Century Centre and hiking trails. These homes have quality finishes and are semi customizable with a number of choice upgrades to suit your style and budget.

Rooms:

Kitchen	11'5" x 12'0"
Diningroom	14'7" x 7'10"
Livingroom	14'7" x 13'0"
Bedroom	13'4" x 17'4"
Ensuite	13'4" x 5'3"
Bedroom 2	11'1" x 12'4"
Den	11'1" x 10'0"
Main Bath	12'3" x 7'4"
Laundry	7'4" x 7'0"
Utility	4'7" x 9'0"
Garage	12'0" x 21'4"

Building Features:

Semi-Detached, 1 Storey

Exterior:

Vinyl, Stone

Utilities:

Municiple Sewer

Water:

Well

Heating & Cooling:

Heat Pump, Electric baseboard

Parking Type:

Attached Garage